

Top of the South Area School Tournament



**Collingwood
Rai Valley
Tapawera
Karamea
Murchison
Reefton
South Westland**

Tournament Overview

Tournament Statement

The mission of Top of the South Area Schools is; “To work as a cluster to enhance the learning and social opportunities for students’

Tournament provides excellent opportunities for networking and creates pathways for our students to participate at higher levels of sport at a national level.

Tournament is a senior student activity for students Year 9 and above. Year 8s can be included if required but not at the expense of the participation of a more senior student.

Should numbers be a problem, the host school should be approached in the first place to supplement numbers. Other area schools may be asked to supplement teams. These members remain with the team throughout tournament.

The tournament programme consists of two elements: a core programme, sports which have to be offered at each tournament and a discretionary programme.

The core programme consists of the following sports:

- Basketball – boys and girls
- Netball – girls
- Volleyball – boys and girls
- Football 7 a-side – boys and girls
- Ki O Rahi – mixed
- Golf – mixed
- Rugby trials – Boys

The discretionary programme:

Sporting / cultural / creative activities which the host school is able to offer, utilising resources and interests.

These have equal weighting with the core sports to enable smaller schools to be competitive.

Examples could include: Food, Art, Performance, Technology Challenges, etc.

The tournament is made up of seven area schools in the Top of the South. Collingwood Area School, Rai Valley Area School, Tapawera Area School, Karamea Area School, Murchison Area School, Reefton Area School and South Westland Area School. An eighth team may be included at the discretion of the host school.

The brief for tournament is to achieve the following:

- Enable pathways to National Area Schools’ Tournament
- Ensure the principles of fair play are followed and celebrated
- The programme is balanced and enables all schools to be successful
- The pastoral needs of visiting students are met
- There is a unique local flavour to some of the activities

List of Contact People

A website to host tournament material has been established. We would ask that any communications around tournament is directed to the tournament director through the website or through their e-mail address.

All communication between the schools shall be through the tournament director.

Tournament Director	Wayne Wright
Programme	Rebecca Turnbull
Support Programme	Simon Burke
Website	www.ras.school.nz
Office Manager Finances	Katie Thomson Office Manager
Student Support	Sue Bass
Deputy Principal	Sue Bass
Principal	Wayne Wright

All of these staff members can be contacted at the school.

Phone 03 7328 421

E-mail office@ras.school.nz
waynewright@ras.school.nz

Team Arrival

Teams are to arrive at Reefton Area School by 3:00 p.m. on Sunday March 22.
Equipment and materials can be stored in homerooms at this time.
Mihi Whakatau starts at 4: 00 p.m.

Tournament Mihi Whakatau / Poroporoake

Venue: Reefton Area School Hall

Time: Sunday – 4:00 p.m.

Visiting schools (Manuhiri) are to gather in the school quad. We will supply a person to guide the visitors in.

We will karanga (call you in) Rai Valley will be given the first option of replying to karanga. If not we will provide a caller for our guests if needed.

Manuhiri move into the hall. It is not necessary to take footwear off on this occasion.

Visiting schools will be welcomed on the seating provided.

Once seated we will begin with the first korero followed by waiata.

The other schools are invited to korero followed by waiata and the presentation of koha.

The order is as follows: Rai Valley, Murchison, South Westland, Tapawera, Karama and Collingwood.

After all the other schools have spoken we will finish with the second korero, waiata and karakia.

We then invite representatives student leaders and key staff to join line for hongiri.

Tournament Poroporoake (Farewell)

All students to gather in the school hall.

Once all are seated we will begin with the first korero and then invite other schools to korero.

Naming of the tournament teams.

Finish with our second whaikorero and karakia.

Farewells and depart.

Tikanga

All participating schools have a commitment to biculturalism. Where appropriate karakia timitanga, karakia mutunga and karakia kai will be used. Karakia timitanga will start each day at tournament briefing. These practices will reflect the mana whenua of the host school. Opportunities to include a Māori context in tournament challenges will be explored.

Home Rooms

During the week each school will be allocated a homeroom. These rooms are only for the use of students from the allocated school. We ask that students are made aware of this and that schools ensure students from other schools stay out of home rooms at all times. Each visiting school will have a host who will be their “go to” person if they have any issues.

School	Home Room
Collingwood Area School	Room 8 – Pat Lewis
Tapawera Area School	Room 6 – Art Room Maria Wistrand
South Westland Area School	Room 5B – Carina Webb
Reefton Area School	Room 4 – Rebecca Turnbull
Karamea Area School	Room 5A – Carolyn Milne
Rai Valley Area School	DL Room – Simon Burke
Murchison Area School	Room 2 – Ruth Topp

Homeroms will be locked in the evenings and opened again before the buses arrive in the morning. Where possible we will be giving visiting schools a key for their room so that can keep team resources and personal valuables secure.

Sprigs and cleats are not to be worn in any school building. Dirty footwear should be left outside the rooms.

Please leave rooms in a tidy condition at the end of the day so our support staff can clean rooms.

Student Area

We are encouraging students to mingle with their peers in the school hall. This will be set up as a place for students to relax between events.

Should wet weather intervene the hall will be used as an alternative venue for some activities

Daily Briefing

The daily organisation briefing will be held in the staffroom. Staff will have an informal meeting on the Sunday evening regarding Mondays programme. If there is no need for significant programme changes these meetings should be brief.

Each school should send at least one representative to these at 8:10 a.m. At 8:30 a.m. each day, each school will hold a briefing in its homeroom.

Notice Boards

A noticeboard in the foyer of the admin block and in the staffroom will have all tournament information posted on it. There will be comprehensive updates, draws, results etc.

Tournament Bulletins will be posted on the website for schools to keep track of Tournament results and activities.

Staff / Supporters / Helpers Lunches, Morning and Afternoon Teas

These will be available in the staff room on a more-or-less continuous basis 10:30 a.m. – 3:30 p.m. Monday to Thursday in the Staffroom

Student Food

Sunday evening – There is a barbecue at school for students and staff prior to billets and accommodation being sorted out.

Wednesday evening – There is a barbecue at school prior to Wednesday evening activities.

Canteen

The canteen will operate from the kitchen area in the school hall.

A range of food items will be for sale.

Prices will be included in the tournament booklet.

Sun Smart / Insect Repellent

Sunscreen will be available at the office during the day.

Sunscreen will be included in all first aid kits.

Sunscreen will be available in homerooms.

First Aid

St. Johns will be in attendance Monday through to Thursday to provide onsite first aid.

Any ongoing treatment will be directed to the Reefton Medical Centre. Accompanying staff will be required to provide support. It is highly likely that students may have to travel through to Grey Base Hospital in Greymouth for any serious injury or illness.

First aid kits will be handed out every day from the office, to be taken by a delegated person to each venue that is not covered by St Johns – and returned at the end of the day back to the office.

These will be restocked each day.

The sick bay will serve as the first aid station at school if required.

Icepacks will be available from the hall kitchen freezer and staffroom.

Guidance / Pastoral Support

School supervisors are asked to keep a list of emergency contacts for members of their respective teams.

Supervising staff will be responsible for the guidance and pastoral support of their team members.

The tournament director will have overall responsibility for guidance / pastoral issues. Contact with other school supervisors will be made should it be necessary. The tournament director will need the phone number contacts for each school's supervising staff.

An overview of all this information to be kept in the office as a central place if needed in the case of emergency

Lost Property

At the conclusion of each day's activities RAS staff will do a run around of all venues and collect up any gear left lying around.

Lost property will be displayed on tables in the hall (student) area.

Physio / Strapping

The school is unable to provide physio / strapping facilities.

At Home Curfew

All billeted students are expected to be at home by 10:00 each night. Billeting hosts may of course require their billets to be at home before this time.

Visiting students with difficulties will be able to contact their accompanying staff, Wayne Wright 7238 527 or Sue Bass 7328 682

Emergency Services Contacts

Ring "111" in any emergency

St Johns will be at all necessary sport events

The Reefton Medical Centre has been notified of the week's activities. Contact number 769 7440

The Reefton Hospital has outpatient facilities. The Contact number is 769 7420

Reefton Police has been notified of the week's activities. Contact number 732 8500

Safety Action Plans

Safety Action Plans will be developed for all events involving identified risk.

Mouth Guards / Safety Equipment

Mouth guards are recommended for all contact sports.

Please take note of any safety requirements for individual activities.

Toilets / Showers / Changing Rooms

School Gym.

Female changing room / 6 showers / 2 toilets to the side of the gym foyer.

Male changing room / 6 showers / 2 toilets to the side of the gym foyer.

Hall Foyer toilet facilities

Senior toilet block.

On the Thursday prior to the big night out students may use the showers in the changing rooms.

They may be able to go home to billets so as long as they have informed their supervising staff.

Transport

Buses will arrive at school between 8.30 and 8.40 a.m. They depart the school site at 3.15.

Reefton Area School staff will ensure visiting students are checked prior to departure.

Alternative travel arrangements for students will be made to enable them to attend after school hours activities.

Security

The Reefton Area School safe is available

Office keys are held by office staff, the principal and deputy principal.

The principal and office staff hold safe keys.

Fire Alarm

Should a continuous bell ring – staff are asked to evacuate students to the fenced tennis court area. Fire wardens will assemble the students there. Supervising staff are to take their school's roll and notify the wardens of any missing students.

Tournament Fees

The tournament fee will be \$80.00 per student.

Tournament Shirt \$55.00

Schools will be invoiced for the fees at the completion of tournament.

Tournament Shirt

A tournament shirt is currently under design.

These are to be ordered prior to tournament.

Information will appear on the website soon on the design and ordering process.

Draws

Depending on the time frames available, a 7 team consolation draw or a 7 team double elimination draw should be considered.

At Reefton a 7 team consolation draw will be used for the majority of activities.

If 8 teams are involved, 2 pools of 4 should play a round robin, leading into semi-finals / finals.

Where appropriate, each participating team should have a minimum of 2 games in core programme events.

Draws are to be fairly assigned so that teams are not disadvantaged over the tournament programme.

Points Awarded

1st 10

2nd 8

3rd 7

4th 6

5th, 6th, 7th, 8th, 5

Fair Play

A Fair Play Award system will be running through out tournament week. Staff, referees and coaches can nominate students by completing a fair play award card and putting it in a box in the office.

To be nominated for fair play, a student will:

- Play by the rules.
- Work hard to do their best at all times.
- Be a good sport and recognise good players and good plays by all involved.
- Thank coaches, officials, the opposition and supporters.
- Help others in the team when they can.

There will be an individual and team award presented for fair play at the conclusion of the tournament.

Tournament Food

Staff/volunteers/refs/umpires

Available from 10am – 3.30pm

Continuous food will be provided in the staffroom. There will be a soup and hot dish daily along with sandwiches, cake, slices, muffins, muesli bars and fruit. Tea and coffee also provided

Student Café Open from 10am – 3pm

HOT FOOD	
Mince Pie	\$3
Steak and Cheese Pie	\$3
Large Sausage roll	\$3
Pizza (per slice)	\$2.50
SANDWICHES	
Rolls (Ham, Chicken or salad)	\$3.50
Wraps (Ham, chicken or salad)	\$3
Choc Chip Cookies	\$1.50
Potato Chips	\$2
Bag mixed lollies	\$1
Fresh fruit salad in pottles	\$2
DRINKS	
Water (500ml)	\$2
Juicies	\$1.50
Up & Go's	\$2.50
Fruit Smoothies	\$2.50

BBQ's – Sunday and Wednesday – 5pm EVERYONE

Sunday Sausage Sizzle
Nachos

Wednesday Sausage Sizzle
Make your own Burgers

DANCE – Thursday Night 7pm – EVERYONE

Mocktails
Finger Food

Accommodation for Tournament Reefton 2020

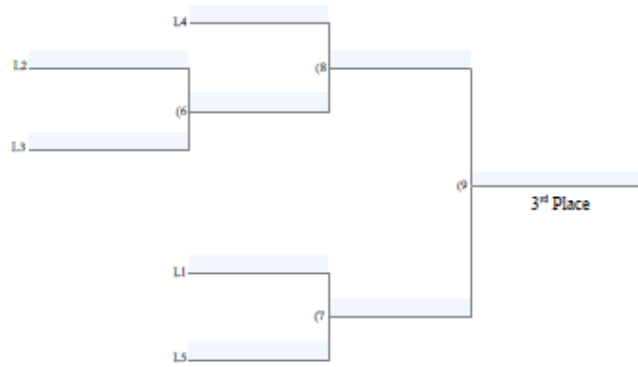
Name	Description	Contact	Phone			
Lantern Court Motels	Affordable one and two bedroom units, three bedroom apartment and superior rooms with spa baths.	info@lanterncourtmotel.co.nz	0800 526 837			
Bell Bird Motels	Tidy self contained one or two bedroom units, Riverside cottage and Historic Villa.	bellbird.motel@xtra.co.nz	0800 235 524			
Dawsons Auto	Self contained twin/double rooms or a two or three bedroom unit, each sleeping up to six people.	stay@dawsonshotel.co.nz	03 7328 406			
Old Nurses Home Guesthouse	Single/twin or double rooms with access to shared bathroom facilities, or a studio room complete with ensuite.	info@reeftonaccommodation.co.nz	03 7328 881			
The Old Breadshop Backpackers	Backpackers house with linen included, shared bathroom facilities.	breadshopbackpackers@gmail.com	03 7328 420			
Reef Cottage Bed & Breakfast	Four star rooms with queen or king sized beds and ensuite, breakfast also available.	info@reefcottage.co.nz	0800 774 440			
Reduced rate at Reef Cottage if you say you are here for tournament						
Quartz Lodge	Comfortable bed and breakfast offering four rooms with various bedding configurations.	quartzlodge78@gmail.com	03 7328 383			
Alfresco Historic Villas	Self contained quality accommodation, there is also a three bedroom Holiday Villa.	paula.reefton@xtra.co.nz	03 7328 513			
The Old Knox Church	Five bedroom lovingly restored church, sleeps up to 12 people.	https://www.holidayhouses.co.nz/listing/76086				
Wilson's Hotel	Heritage hotel	rvinfo@xtra.co.nz	03 7328 880			
Hotel Reefton	Quintessential country hotel	rvinfo@xtra.co.nz	03 7328 447			
Reefton's Hideaway	18 self contained cottages	reservation@reefton.site	211027142			
Air BnB	Relax Reefton	https://www.airbnb.co.nz/rooms/21348608?source_impression_id=p3_1581020185_Qc8ipAL9XUCwSfSx				
	Alfrescos Holiday Flat	https://www.airbnb.co.nz/rooms/32141329?source_impression_id=p3_1581020263_X0zx4X%2BhPwUs6KZu				
	CS Accommodation Unit B	https://www.airbnb.co.nz/rooms/29422786?location=Reefton%2C%20New%20Zealand&source_impression_id=p3_1581020372_%2BNeEghIz7kYq7LH				
	N°10 Blacks Point	https://www.airbnb.co.nz/rooms/29960806?location=Reefton%2C%20New%20Zealand&source_impression_id=p3_1581020412_MEYXAdHoA%2BxE7py				
	Little Red Riding Hood	https://www.airbnb.co.nz/rooms/38080453?location=Reefton%2C%20New%20Zealand&source_impression_id=p3_1581020451_c6w9qO0AYUlv52				
	Cosy Cottage	https://www.airbnb.co.nz/rooms/33859481?location=Reefton%2C%20New%20Zealand&source_impression_id=p3_1581020506_qlz%2BKOWEPxwGm1B				
	Harold House	https://www.airbnb.co.nz/rooms/38756687?location=Reefton%2C%20West%20Coast&adults=1&source_impression_id=p3_1581024102_Jmgyh6uaX4Fzj5O8				
	Special rate \$650 for 5 nights email direct jaws@kinct.co.nz (breakfast not included) 3 double rooms - could add air mattresses					
Book a Bach	Blacks Point Cottage	https://www.bookabach.co.nz/holiday-accommodation/p20038410?noDates=true				

Winner's Bracket

7 Team Consolation Tournament



Consolation Bracket



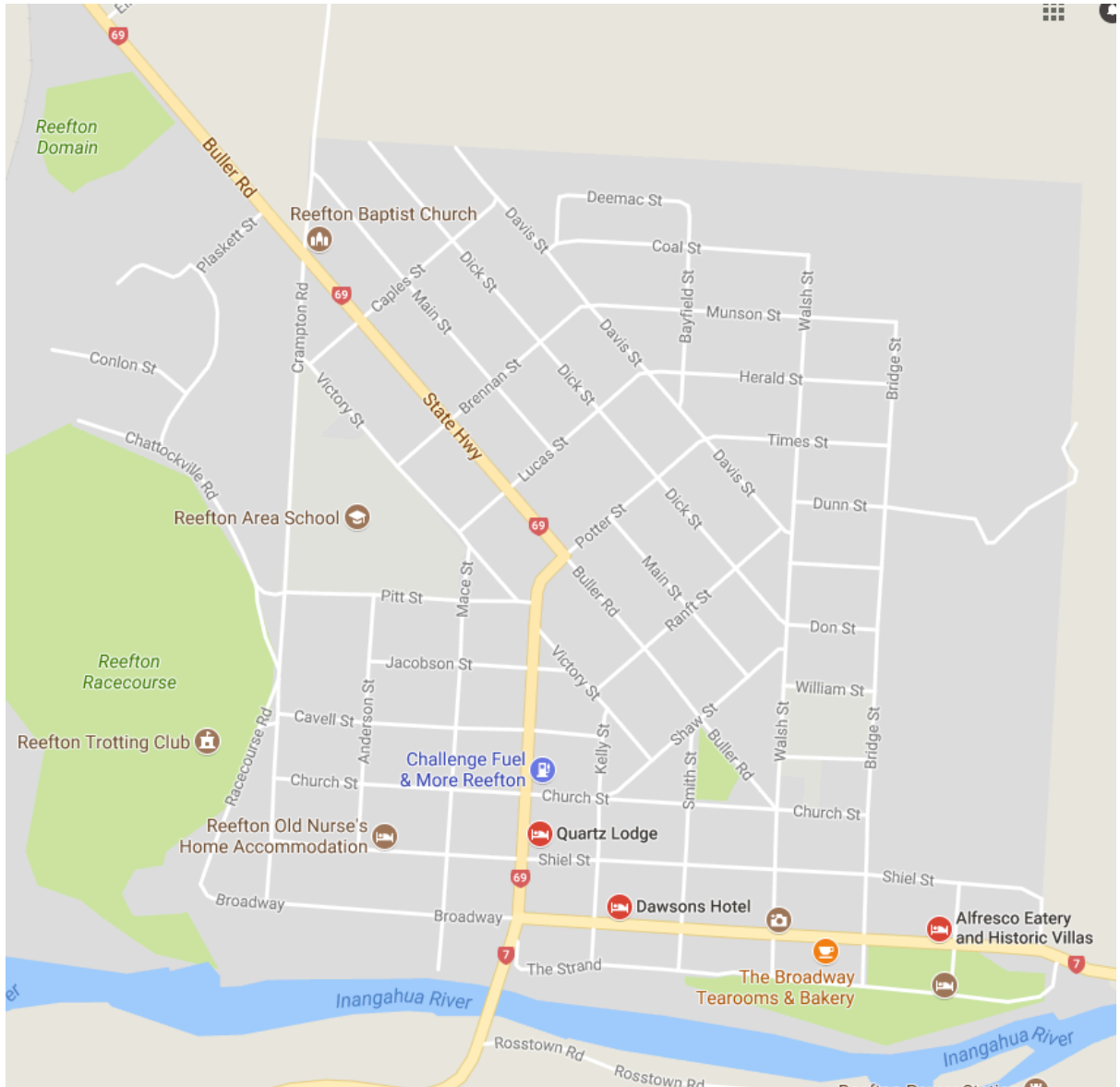
2nd Place (Loser of 10)

4th Place (Loser of 9)

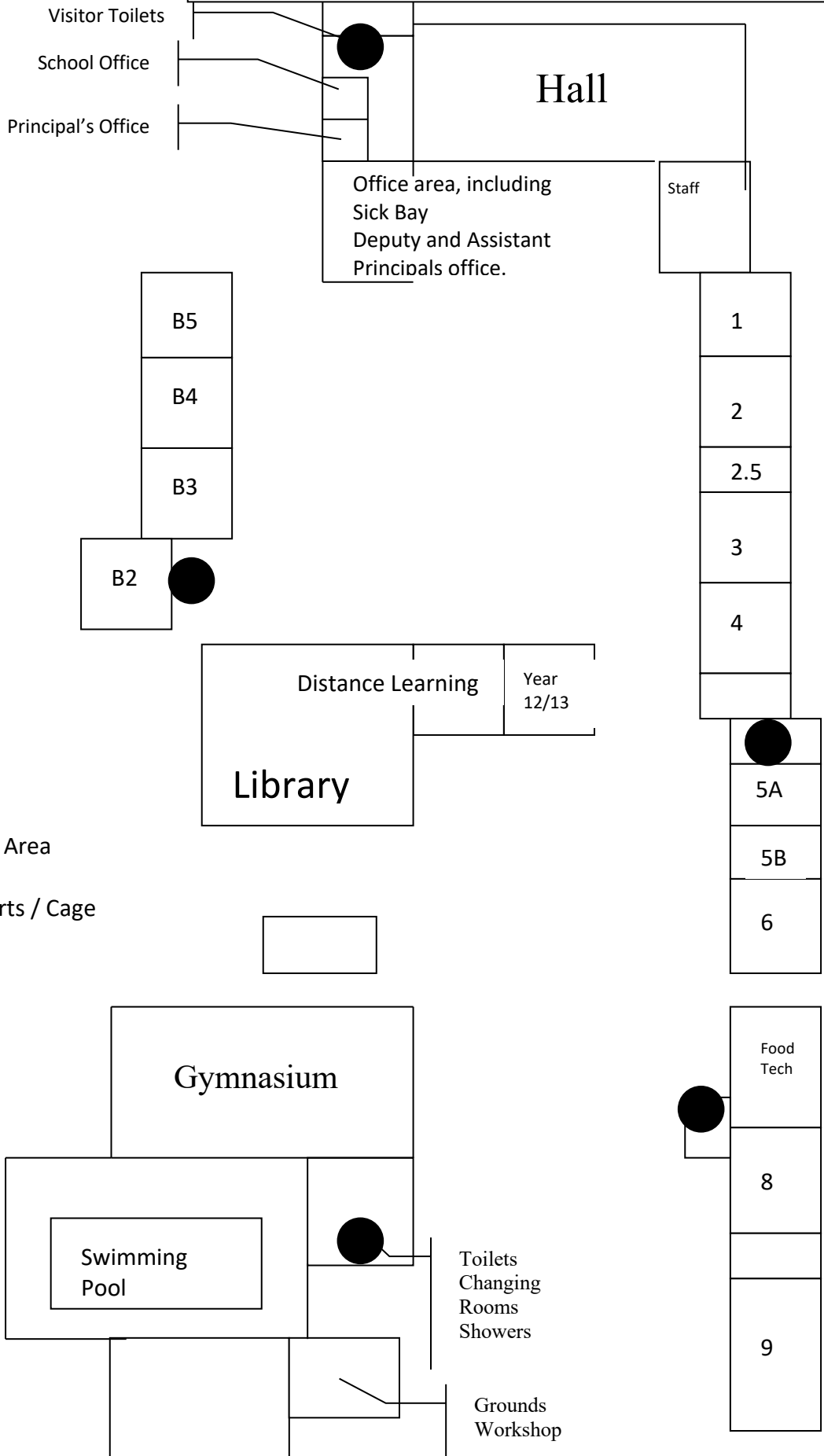
Winner's Bracket

7 Team Double Tournament





Reefton Area School Plan



Evacuation Area

Tennis Courts / Cage